

**DN 15 / DN 20**

Pipe connection	Internal thread Rp (ISO 7/1)
Medium temperature	+6...+80 °C
Linear flow characteristic	Sequence I: 0–30° Dead zone: 30–60° Sequence II: 60–90°
Leakage rate	Leakage rate A, air bubble tight (EN 12266-1)

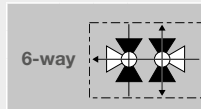
DN 15			DN 20			
$k_{vs}$ [m³/h]	$k_{vs}$ [m³/h]	Valve type	$k_{vs}$ [m³/h]	$k_{vs}$ [m³/h]	Valve type	
Sequence I			Sequence I			
Sequence II			Sequence II			
0.25	0.25	R3015-P25-P25-B2	0.63	1.6	R3020-P63-1P6-B2	
	0.4	R3015-P25-P4-B2		2.5	R3020-P63-2P5-B2	
	0.63	R3015-P25-P63-B2		1	1.6	R3020-1-1P6-B2
	1	R3015-P25-1-B2			2.5	R3020-1-2P5-B2
	1.3	R3015-P25-1P3-B2		1.6	0.63	R3020-1P6-P63-B2
0.4	0.25	R3015-P4-P25-B2			1	R3020-1P6-1-B2
	0.4	R3015-P4-P4-B2		1.6	R3020-1P6-1P6-B2	
	0.63	R3015-P4-P63-B2		2.5	R3020-1P6-2P5-B2	
	1	R3015-P4-1-B2		0.63	0.63	R3020-2P5-P63-B2
1.3	R3015-P4-1P3-B2	1			R3020-2P5-1-B2	
0.63	0.25	R3015-P63-P25-B2	2.5	1.6	R3020-2P5-1P6-B2	
	0.4	R3015-P63-P4-B2		2.5	R3020-2P5-2P5-B2	
	0.63	R3015-P63-P63-B2		4	R3020-2P5-4-B2	
	1	R3015-P63-1-B2		2.5	2.5	R3020-4-2P5-B2
1.3	R3015-P63-1P3-B2	4	R3020-4-4-B2			
1	0.25	R3015-1-P25-B2	4	2.5	R3020-4-2P5-B2	
	0.4	R3015-1-P4-B2		4	R3020-4-4-B2	
	0.63	R3015-1-P63-B2				
	1	R3015-1-1-B2				
1.3	1.3	R3015-1-1P3-B2				
	0.25	R3015-1P3-P25-B2				
	0.4	R3015-1P3-P4-B2				
	0.63	R3015-1P3-P63-B2				
1	R3015-1P3-1-B2					
1.3	R3015-1P3-1P3-B2					

## Suitable actuators

- Nominal torque
- Modulating (2–10 V)
- Modulating (2–10 V, variable)
- MP-Bus® communication<sup>1)</sup>
- Nominal voltage 24 V AC/DC
- Running time motor 90°
- Running time adjustable



Closed water circuit (pH &gt; 7)

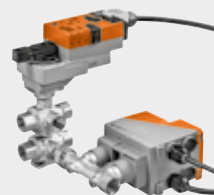


Actuators		Actuator type		$\Delta p_{max}$ [kPa]	$\Delta p_{max}$ [kPa]
	5 Nm	•	LR24A-SR	100	100
		•	LR24A-MP	100	100

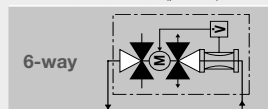
<sup>1)</sup> Control, operating range, position feedback, running time and further functions are adjustable on MP types using PC-Tool.

**Electronic pressure-independent 6-way characterised control valve / Internal thread / PN 16**
**DN 15 / DN 20**

Pipe connection	Internal thread Rp (ISO 7/1)
Medium temperature	+6...+80 °C
Flow characteristic	Linear
Leakrate	Leakage rate A, air bubble tight (EN 12266-1)
$V_{max}$	Freely adjustable 5...100% of $V_{nom}$
Control, operating range, position feedback, running time and further functions are parameterisable with ZTH EU	



Closed water circuit (pH &gt; 7)



## Suitable actuators

- Nenn Drehmoment
- Modulating (2–10 V, variable)
- MP-Bus® communication
- BACnet IP communication
- BACnet MS/TP communication
- Nominal voltage 24 V AC/DC
- Running time motor 90°

$V_{nom}$ [l/s]	$V_{max}$ low-noise [l/s]	$V_{nom}$ [l/min]	$V_{max}$ low-noise [l/min]
0.35	0.23	21	14
0.65	0.45	39	27

DN15	DN20
Valve type with actuator	Valve type with actuator
EP015R-R6+SR	EP020R-R6+SR

Actuators		Actuator type		$\Delta p_{max}$ [kPa]	$\Delta p_{max}$ [kPa]
	5 Nm	•	LR..	110	110
		•			